

# The Association of European Fibre and Paper Research Organisations



# Rationale

- In the European pulp and paper sector no platform has been existing where the research community (universities and institutes) can form joint opinions.
- Such platforms do exist in the forestry and woodworking areas.
  -  European Forest Institute (EFI)
  - 
- With the development of the Forest-based Sector Technology Platform the need has become obvious

# Founding procedure of EFPRO

- The four institutes CTP, KCL, PTS and STFI-Packforsk have – after consultation with a number of potential members in Europe - initiated the process to create an  
**“Association of European Fibre and Paper Research Organisation”**
- The “Articles of Association” have been developed and approved.
- The Association was legally established as an international non-profit-organisation according to Belgian law in 2006.
- All other organisations which fulfil the membership criteria are invited to join.

# Scope of EFPRO

A European co-operational framework of organisations, or units thereof,  
engaged in research, technical development, technology transfer, training and/or education  
in the areas of wood processing for fibre making and utilisation of wood-based fibres.

This includes, but is not limited to

- o Pulping
- o Papermaking
- o Further conversion of wood fibres and paper including the addition of other material like chemicals, printing inks, etc

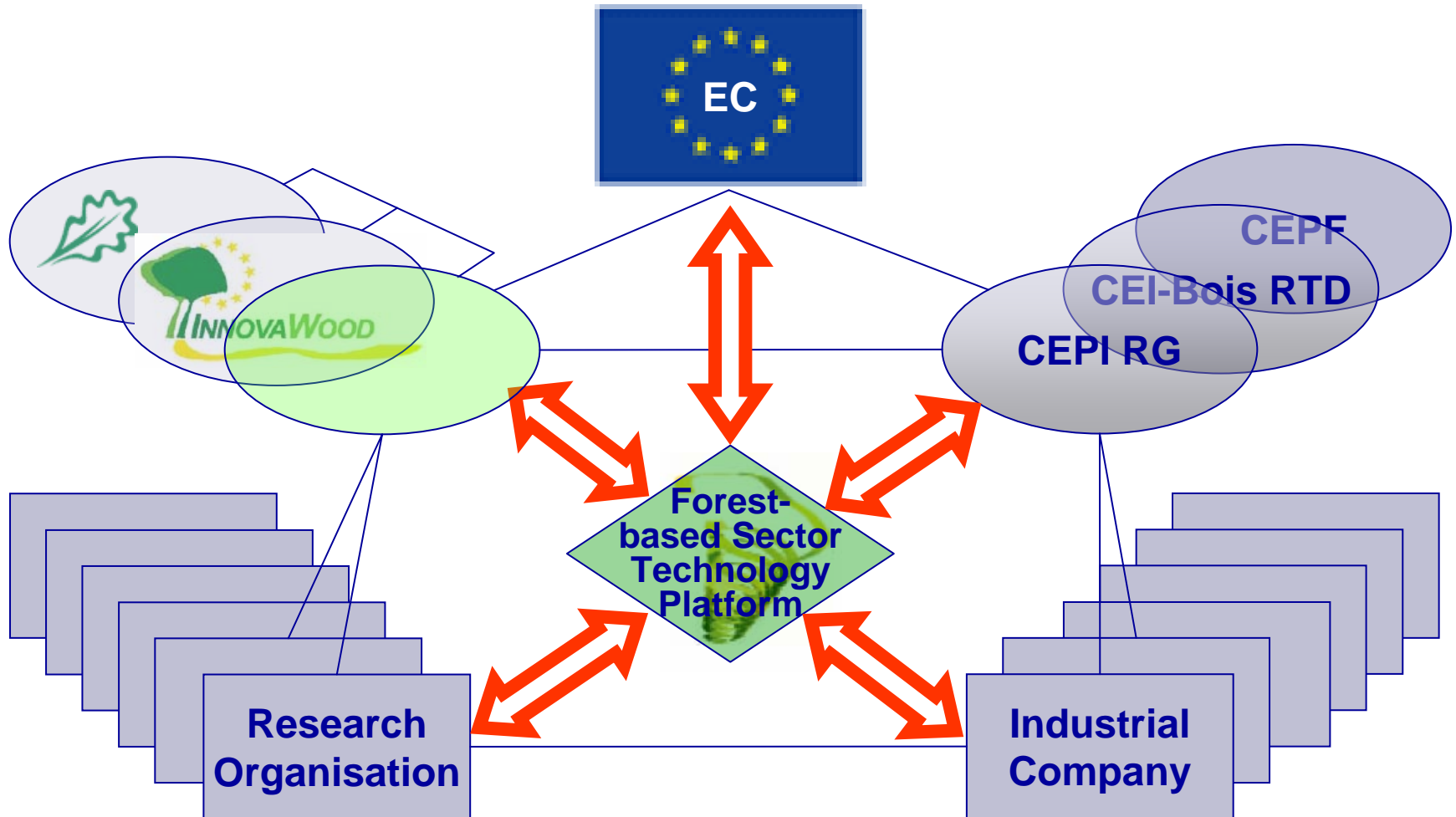
# Mission of EFPRO

To promote and represent the interest of its members and to provide a forum for its members to contribute (within the scope of their activities) to the development of a knowledge-based society, to the competitiveness and the sustainability of the European wood-fibre based sector and to meet society's needs for social cohesion and environmental compatibility.

# Purpose of EFPRO

- To encourage industrial and public bodies to invest more in research
- To enhance research efficiency by fostering networking of its members.
- To encourage industrial and public bodies to apply research findings
- To encourage industrial and public bodies to utilise research capabilities.
- To encourage and to contribute to high-quality education
- To provide industrial associations with know-how, capabilities and network assistance and to advise them on scientific and technological matters.
- To provide support and advice to the European Commission on scientific and technological matters
- To promote interaction with other research bodies within the forest-based sector.

# Networking of EFPRO



# Some activities for implementation

- Encourage and facilitate the exchange of information and joint working between its members
- Foster the application of research projects, funded in whole or in part by the European Commission or other organisations.
- Bring administrative assistance for applying and setting up proposals to the European Framework Programmes for Research and Innovation.
- Support actions in response to large scale initiatives from the European Union, like Forest-based Sector Technology Platform.
- Promote education and training activities within in the scope of EFPRO.
- Promote the mobility and exchange of scientists and research students among the members of EFPRO.
- Promote the access to large or unique research infrastructure among the members of EFPRO.
- Provide views on research needs from the scientific perspective.
- Organise conferences on research issues.

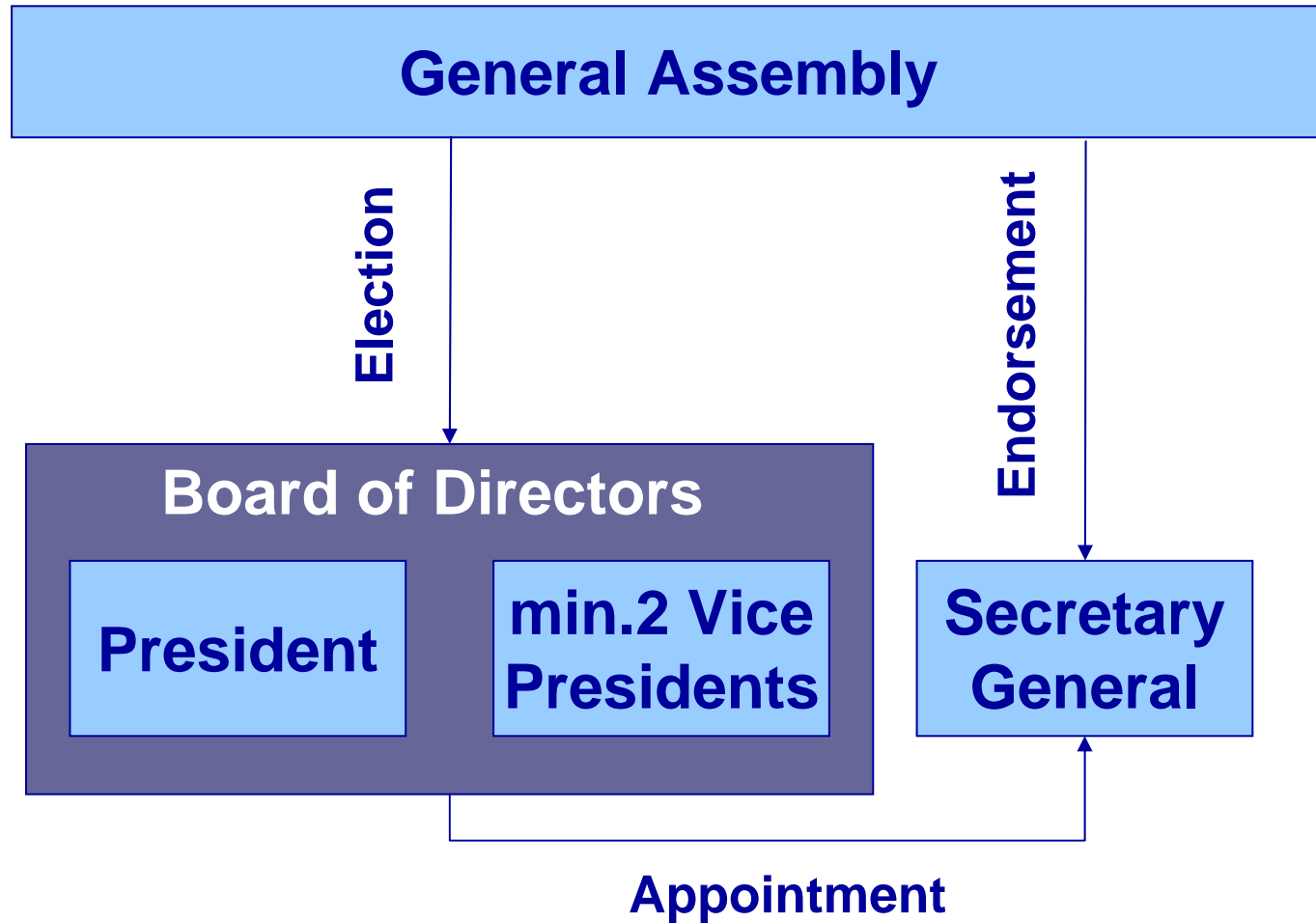
# Membership of EFPRO

Organisations, legally established according to the laws of their country, which demonstrate scientific competence and capabilities within the scope of the Association and do not belong to or serve exclusively a single industrial enterprise.

Two categories of membership:

- Full Members shall be organisations, or units thereof (like divisions of research institutes or university departments/institutions) established in the Member States of the European Union or Associated States.
- Corresponding Members shall be organisations, or units thereof (like divisions of research institutes or university departments/institutions) established in other countries than the European Union or Associated States.

# Governing Structure of EFPRO



You want know more ?

# Association of European Fibre and Paper Research Organisations

Registered Address:

250 Avenue Louise,  
B-1050 BRUSSELS  
Belgium

Contact us at:

Werner Foerster  
Secretary General  
Hess-Strasse 134  
D-80797 MUENCHEN  
Germany  
Tel. +49 89 121 46 250  
e-mail: [werner.foerster@efpro.org](mailto:werner.foerster@efpro.org)